



# Alubond

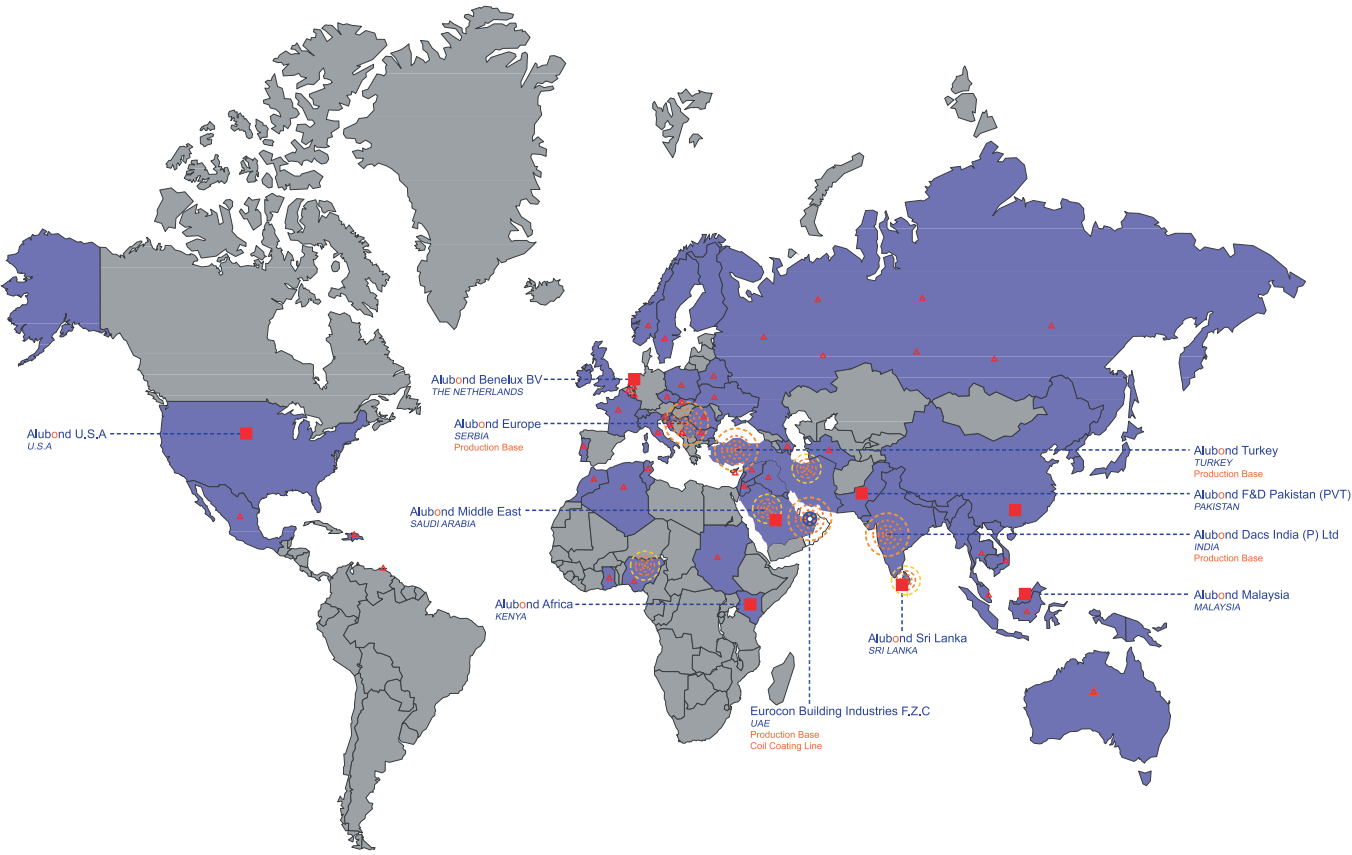
U.S.A

Fire Rated Metal Composites



COLOR  
CHART

# Alubond Global Presence

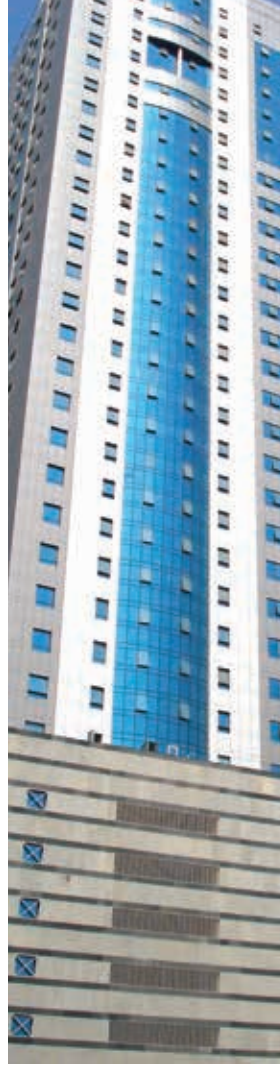


-  MANUFACTURING FACILITIES
-  UPCOMING MANUFACTURING FACILITIES
-  MARKETING BASE
-  DISTRIBUTORS
-  DISTRIBUTION NETWORK
-  HEAD QUARTERS

The World's Largest Metal Composite Brand

# ALUBOND U.S.A WORLD WIDE PROJECTS

ALUBOND U.S.A has been the face of iconic projects Worldwide extensively specified by World Renowned Architects as their choice for exterior façades and interior ceilings and wall linings. The tallest tower in the world Burj Khalifa by Skidmore, Owings and Merrill (SOM), The Address Hotel by W.S Atkins, The Formula One Yas Island by Burt Hill, Index Tower by Sir Norman Foster, Infosys Training Centre by Hafiz Contractor, International Airports of Dubai, Sharjah, Hyderabad, Mumbai, Cairo, Sharm Al Sheik, Khartoum by Dar Al Handasah and other International Architects are some of the selected project references.



Nasir Tower, Sharjah



Sharm El Sheikh Airport, Egypt  
Dar Al Handasah



African Development Bank



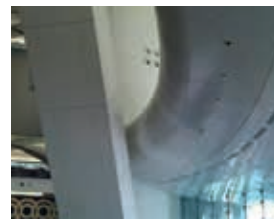
Infosys Training Centre  
India

# ALUBOND U.S.A APPLICATIONS

Alubond's array of colors and finishes combined with the inherent capability of forming different shapes and contours with durability and weather resistance makes Alubond an Architect's Dream. Major Corporations and Multi National Companies have a definitive desire to make their structures an expression of Personal Designer Statement. Alubond U.S.A becomes a natural choice to achieve this objective. The possible applications are limited to the architect's imagination. The versatility of Alubond U.S.A Metal composite panels allow the product to have conventional as well as Exotic Applications.



BUILDING FACADE



CEILING AND INTERIORS



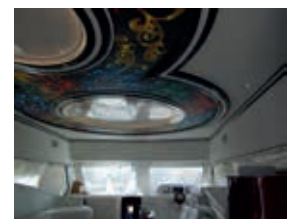
SOLAR MIRRORS



ACOUSTIC MACHINE COVERS



BATHROOMS



YACHT INTERIORS



FIRE RATED DOORS



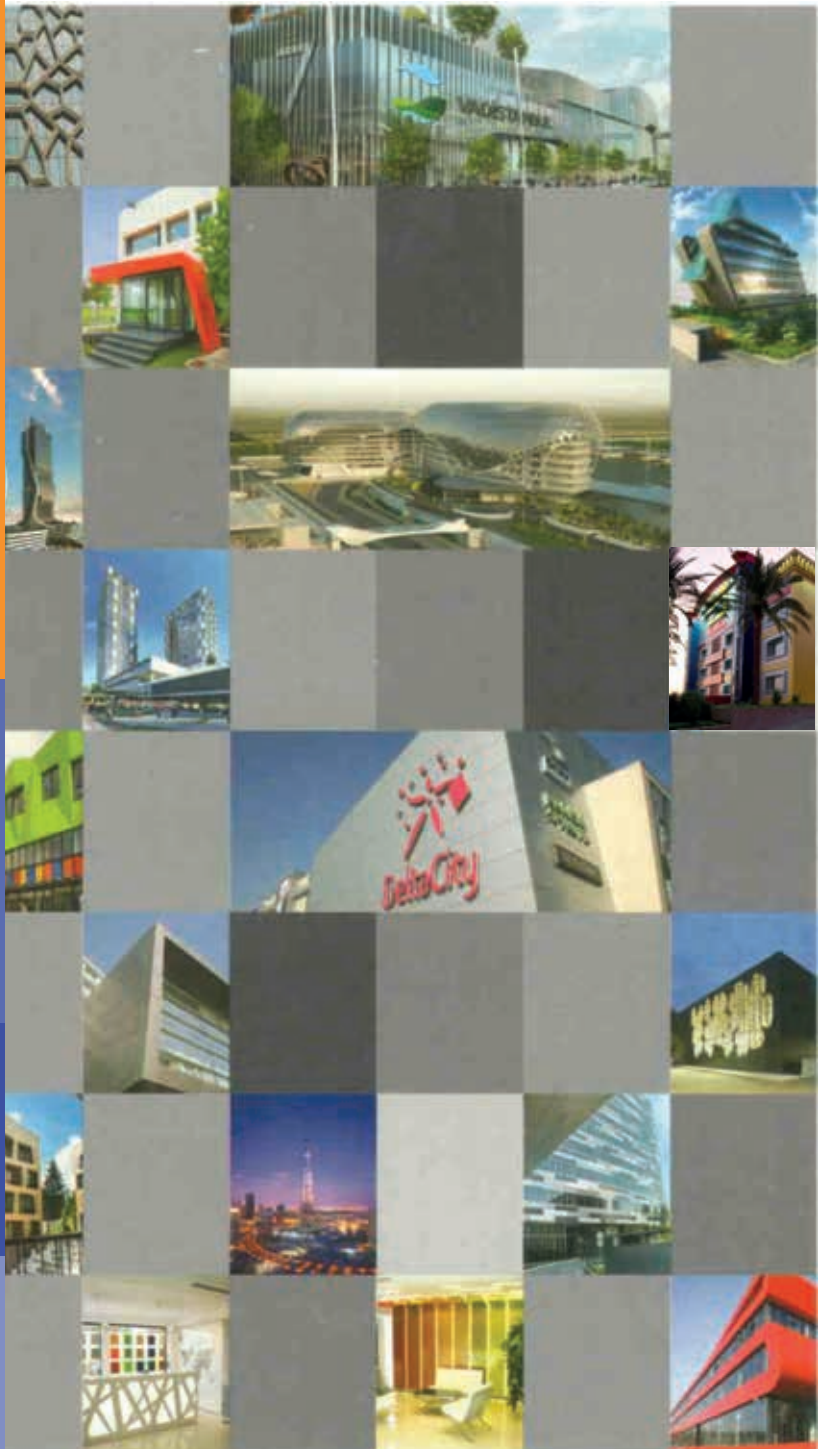
TRANSPORT



CAR PARK GRILLS



## APPLICATIONS



## OUR PRODUCTS

• ACCORDING TO THE REACTION TO FIRE CLASS

- FR-A2** - EN 13501-1 - Class A2  
ASTM E84 - Class A - Core Exposed  
NFPA 285 Meet The Requirements
- FR-B1** - EN 13501-1 - Class B  
ASTM E84 - Class A - Core Exposed  
NFPA 285 Meet The Requirements
- FR-B2** - EN 13501-1 - Class E  
DIN4102-1 - Class B2  
ASTM E84 - Class A  
BS 476 Part 6&7 : Class 0 & Class 1  
NFPA 259 Meet The Requirements

• *OUR RANGE OF COMPOSITE SHEETS ARE :-*

- Aluminum
- Stainless Steel
- Copper
- Zinc
- Titanium

# Alubond Metallic Colors



ALM-101 BRIGHT SILVER



ALM-102 CHAMPAGNE GOLD



ALM-103 METALLIC BRASS



ALM-104 GRAY METALLIC SILVER



ALM-106 METALLIC JADE



ALM-107 CHAMPAGNE SILVER



ALM-108 METALLIC BRONZE



ALM-109 METALLIC GOLD



ALM-110 BRUSHED SILVER



ALM-112 DESERT ROSE METALLIC



ALM-113 BLUE METALLIC



ALM-115 BRIGHT CHAMPAGNE SILVER



ALM-121 RAW GREY



ALM-133 SMOKE SILVER



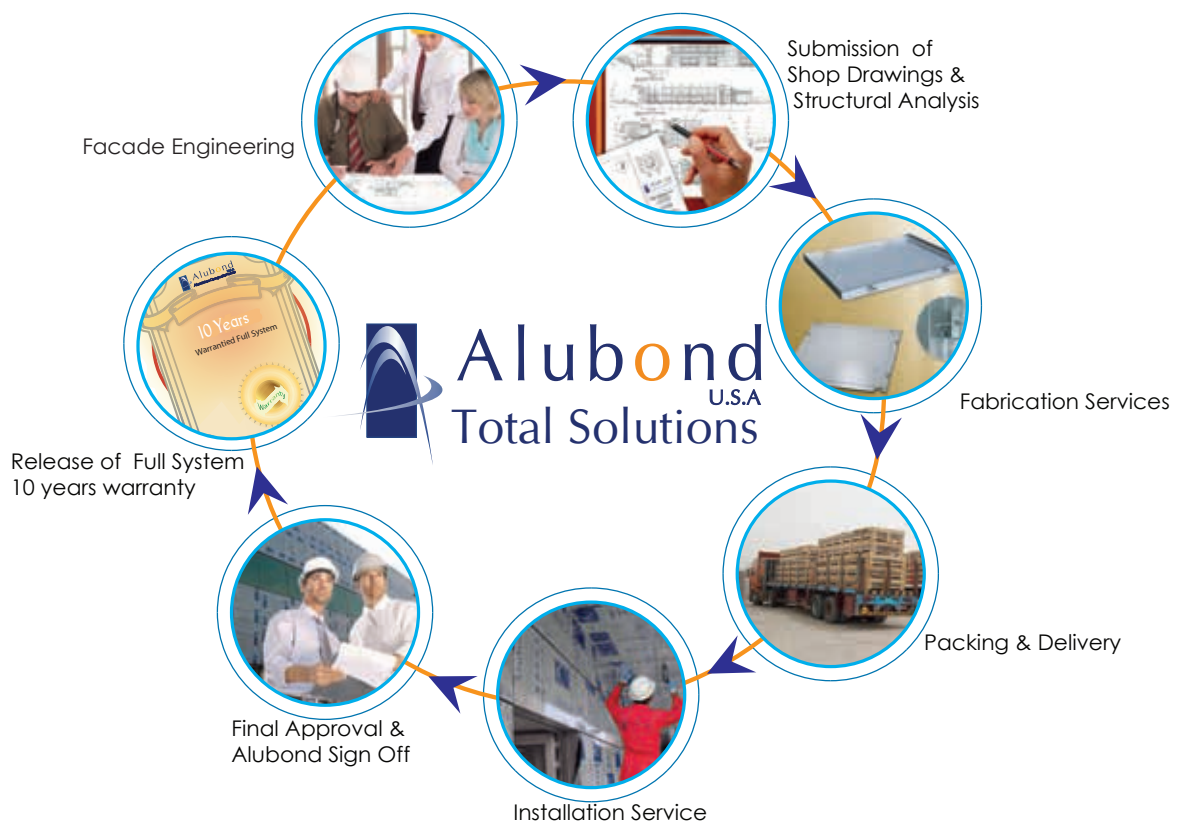
ALM-143 METALLIC BLACK

Color variation may occur between panels from different production batches. If color consistency is required, do not mix different batches. Please order the total requirements for one particular building in a single order for metallic and effect colors, an optical change of color shade may occur due to the metallic particles of these lacquers. To avoid possible reflection differences, it is imperative to install the panels in the same direction as marked on the protective film.



# ALUBOND U.S.A TOTAL SOLUTIONS

ALUBOND U.S.A Total solutions concept is designed to offer a complete Turnkey package of engineering, supply and installation of Alubond U.S.A Fire rated Metal Composites / Alubond U.S.A Solid Aluminum panels using an open joint silicon free ventilated Substructure system with a full system warranty of 10 years.



The Total Solutions concept includes services from façade engineering, onsite building survey, engineering drawings of project specific fixing details, structural analysis of full system of panels with ABTI substructure, fabrication of panels and substructure, supply of full system including accessories to site, installation services by approved installers, Alubond U.S.A approval of installed system and release of 10 years warranty for the full system.

# Alubond Solid Colors



ALS-117 YELLOW



ALS-118 SIGNAL RED



ALS-119 SEA BLUE



ALS-120 DARK BLUE



ALS-122 RAT GREY



ALS-125 WHITE



ALS-126 APRICOT WHITE



ALS-127 IVORY WHITE



ALS-128 PURE WHITE



ALS-130 COAL BLACK



ALS-137 BURGUNDY



ALS-140 BONE WHITE



ALS-142 PURPLE BLUE



ALS-377 ORANGE



ALS-430 CREAM WHITE

Color variation may occur between panels from different production batches. If color consistency is required, do not mix different batches. Please order the total requirements for one particular building in a single order for metallic and effect colors, an optical change of color shade may occur due to the metallic particles of these lacquers. To avoid possible reflection differences, it is imperative to install the panels in the same direction as marked on the protective film.



GROZNY CITY RESIDENTIAL BUILDINGS



HILTON HOTEL



WEST GATE



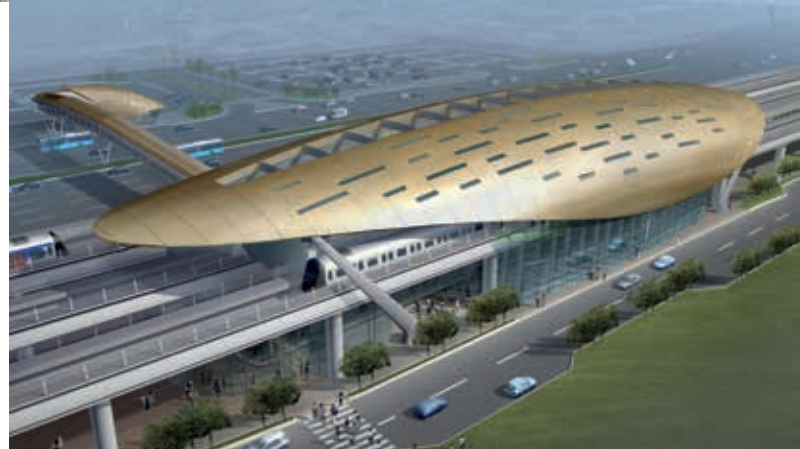
ISTANBLOOM RESIDENCE



GROZNY CITY RESIDENTIAL BUILDINGS



HOLIDAY HOTEL INN -ABU DHABI



DUBAI METRO STATION



# Alubond Wood Colors



ALW-314 WHITEAHORN



ALW-321 ORIENTALCANE



ALW-322 NATURAL OAK



ALW-301 WALNUT



ALW-316 ROSEWOOD



ALW-323 ROYAL TEAK



ALW-320 TEAK



ALW-319 DARK TEAK



ALW-317 QUERCUS



ALW-315 WENGE



ALW-309 ROYAL WENGE



ALW-304 MAHOGANY



AĞAOĞLU MY HOME



INDEX TOWER



AL-BATEEN TOWER-DUBAI



JW MARIOTT MARCQUIS-UAE



SADA PACK COMPANY LEBANON

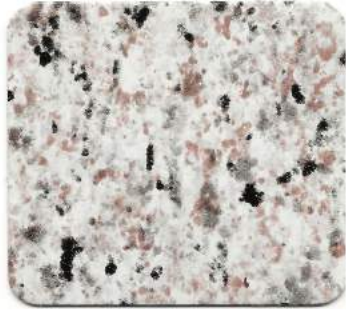


FOLKART TOWERS



QUIPCO TOWER

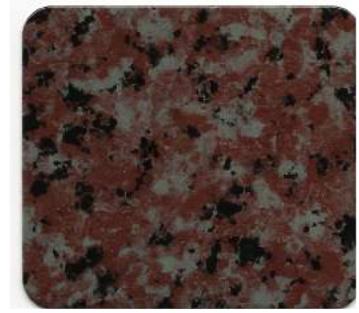
# Alubond Stone Colors



ALG-212 WHITE GRANITE



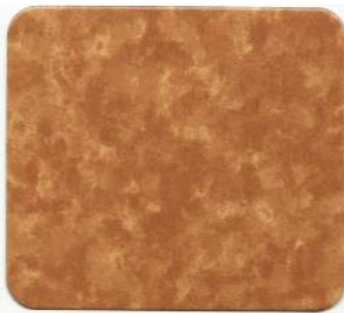
ALG-214 YELLOW GRANITE



ALG-201 ROSA PORRINHO



ALG-211 ROSA GRANITE



ALG-208 SERPEGIANTE



ALG-202 GRANITE NERO



ALG-215 WHITE MARBLE



ALG-206 TRAVERTINE



ALG-216 YELLOW MARBLE



ALG-203 CAFFÈ MARRO



COPPER PANELS - ITALY



MEDIPOL HOSPITAL



CSG HET STREEK



AĞAOĞLU 212 HOTEL



DATACENTER RABOBANK THE NETHERLAND



PODCETRIEK



NAC- MUNICIPAL BUILDING



INFOSYS, PUNE



YAS HOTEL

# Alubond Prismatic Colors



ALP-401 PRISMATIC VIOLET



ALP-402 PRISMATIC WHITE



ALP-404 PRISMATIC GREY



ALP-405 PRISMATIC OLIVE

# Alubond Sparkling Colors



ALK-501 SPARKLING BLACK



ALK-502 SPARKLING WHITE



ALK-504 SPARKLING GOLD



ALK-505 SPARKLING GREY

Color variation may occur between panels from different production batches. If color consistency is required, do not mix different batches. Please order the total requirements for one particular building in a single order for metallic and effect colors, an optical change of color shade may occur due to the metallic particles of these lacquers. To avoid possible reflection differences, it is imperative to install the panels in the same direction as marked on the protective film.



FOURWINDS



ARISTA LIFE



MID ENTERTAINMENT HEAD QUARTER



NAMASTE TOWER



SHERATON HOTEL



RED STRIPE

# Alubond Anodized Series



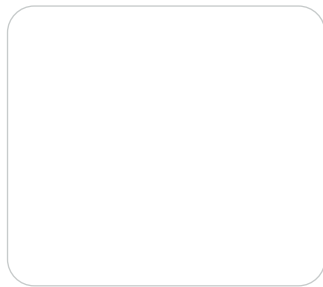
ALM-801 BRUSH



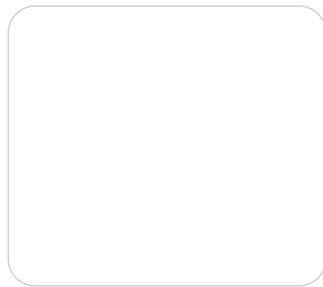
ALM-802 TI-LOOK



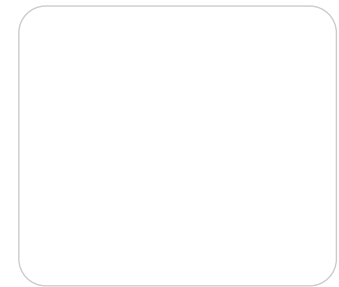
ALM-900 GOLD 20



ALM-902 BRONZE 60



ALM-903 BRONZE 40



ALM-905 BRONZE 55

# Alubond Mirror Effects



ALR-601 HIGH MIRROR



ALS-447 GOLD MIRROR

Interior



ALS-340 SOLAR SILVER MIRROR



ALS-362 SOLAR GOLD MIRROR

Exterior

Color variation may occur between panels from different production batches. If color consistency is required, do not mix different batches. Please order the total requirements for one particular building in a single order for metallic and effect colors, an optical change of color shade may occur due to the metallic particles of these lacquers. To avoid possible reflection differences, it is imperative to install the panels in the same direction as marked on the protective film.

# ALUBOND U.S.A

## PRODUCT DETAILS

### PRODUCT ADVANTAGES

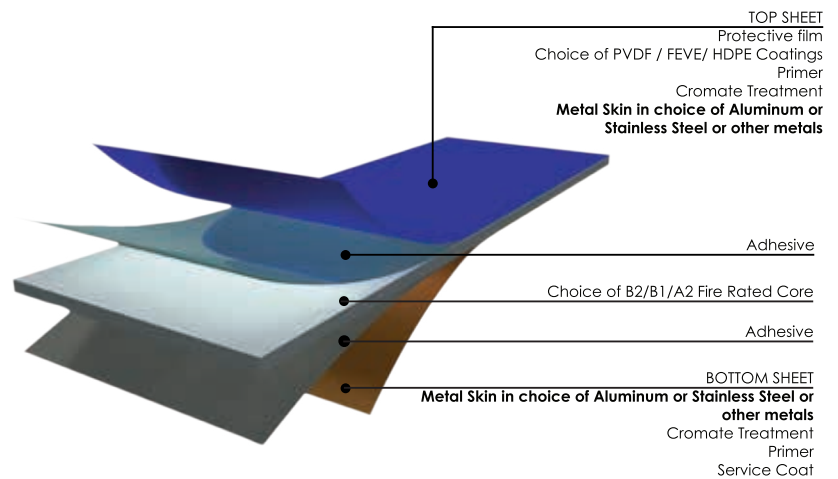
**LIGHTWEIGHT**, yet extremely rigid and flat resulting in an economical option for high quality building facades and interior cladding.

**WEATHER RESISTANCE** combined with high acoustics, Thermal and Fire rated values.

**EXTENSIVE CHOICE** of finishes including Solid, Metallic, Granite, Veneer, and Chameleon Colors.

**HIGHLY MALLEABLE** gives flexibility of shapes making it a versatile panel to achieve complex design solutions.

### PRODUCT COMPOSITES



### PANEL DIMENSIONS

STANDARD WIDTH	1250mm
AVAILABLE WIDTH	1000 mm, 1500mm, 1800 mm
STANDARD LENGTH	3200 mm, 4000 mm
AVAILABLE LENGTH	Custom order upto 11000 mm
AVAILABLE THICKNESS	3mm , 4mm , 5mm, 6mm
AVAILABLE SKIN THICKNES	0.3mm - 0.5mm

### PANEL TOLERANCE

LENGTH	± 4 mm
WIDTH	± 2 mm
THICKNESS	± 0.2 mm upto 4 mm, ± 0.3 mm upto 6 mm
BOW (LENGTH AND OR WIDTH)	Maximum 0.8%
SQUARENESS	Maximum 5 mm
SKIN THICKNESS	As per International Standards

\* Note : FR A2 Max Width 1500 mm



# Alubond Nano Colors



ALM-101 BRIGHT SILVER



ALM-107 CHAMPAGNE SILVER



ALM-121 RAW GREY



ALM-143 METALIC BLACK



ALS-118 SIGNAL RED



ALS-128 WHITE



ALS-130 COAL BLACK



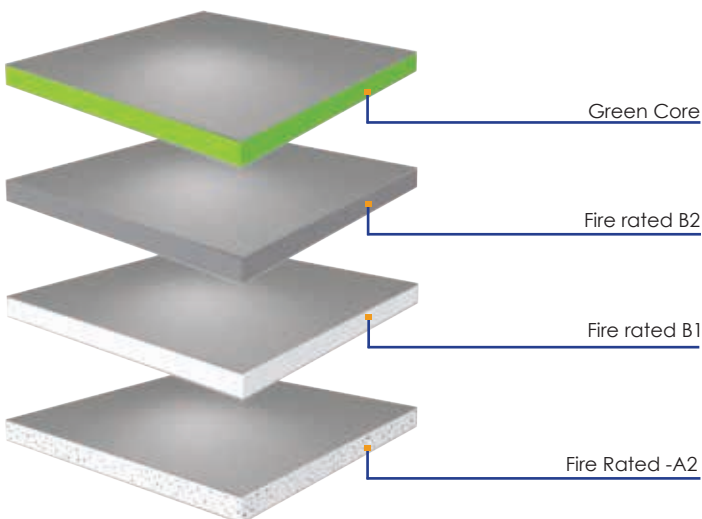
# ALUBOND U.S.A

## FIRE RATED METAL COMPOSITES

CREATING A SUSTAINABLE FUTURE

**ALUBOND u.s.a** is a metal composite panel consisting of two layers of a metallic of LDPE skin like **Aluminum, Stainless Steel, Copper, Zinc, Titanium etc.**, sandwiching a fire rated core in a continuous co-extrusion process.

### CORE SELECTIONS



Alubond u.s.a is a registered brand of American Building Technologies located in Rockford Illinois with production bases in Europe, Middle East and India. Alubond u.s.a is committed to a sustainable future and is now available in three fire rated cores and an innovative eco friendly green core.

Alubond u.s.a has emerged as The World's Largest ACP Brand with new expansions under progress in U.S.A, Russia, Saudi Arabia and Sri Lanka. The installed production capacity by 2016 shall be over 15,000,000 M<sup>2</sup> with 10 production lines and two coil coating lines.



# ALUBOND U.S.A

## FIRE RATED METAL COMPOSITES

### **SURFACE FINISH:**

Alubond U.S.A. Composite sheets are available in PVDF/Lumiflon/HDPE paint systems and can be supplied in any of the paint systems as per the requirement of the customers.

Alubond maintains consistent coating quality through the application of the paints to the Aluminium coil on a continuous coil coating line. Alubond U.S.A. composite sheets are available in Solid colors, Metallic colors, Natural stone & Timber colors, Prismatic and Sparkling colors.

### **WOOD & STONE SERIES:**

Alubond U.S.A. Wood and Stone series composite sheets are developed with state of the art coating technology and with special image transfer process. This coating technology provides excellent natural feel to the surface of the wood/stone series products with outstanding quality.

### **LONGER DURABILITY:**

Alubond U.S.A. anodized Series, which are manufactured with the new generation Eloxal coating process provides a longer durability in exterior environment with its high resistance to all weather conditions and offers a Total Solution to customers.

### **IMAGINATION:**

Alubond U.S.A. Composite sheets offer wide range of colours, choice of surface finishes, products with special patterns and exotic metals which can be used for both interior and exterior environments leaving no limits for imagination for the customers.

### **OUR PROMISE OF QUALITY:**

Alubond U.S.A. is a global brand for the architectural projects and preferred by architects and consultants due to the excellent performance and performance in any kind of weather conditions. Development of innovative product range with highest quality and at most competitive prices provide Alubond the edge over other brands and position Alubond U.S.A. as the leader in the industry.

# ALUBOND U.S.A PROCESSING METHODS

## DRILLING



The drilling of Alubond u.s.a ACP panels can be achieved with twist drills normally used for aluminum and plastics on machines common for metals.

By using high-speed, low feed, occasional raising of the drill and blowing with compressed air, the swarf will be rapidly removed.

## WELDING



The Alubond u.s.a ACP panels can be successfully welded using polyethylene welding rods and a hot-air gun. Slender pieces of Alubond u.s.a ACP panels can also be used on a welding rod. Reinforcement on the welded joint is recommended.

## CUTTING & SAWING



A fine tooth tungsten - carbide tipped (CT) saw blade is the most suitable for cutting Alubond u.s.a ACP panel. Eg. A 60 tooth on 250mm diameter.

## CURVING / FOLDING



Using the standard 3004 H14/H16 alloy, Alubond can be curved to the following minimum radii:

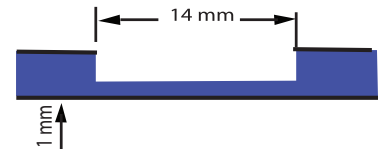
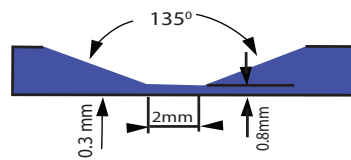
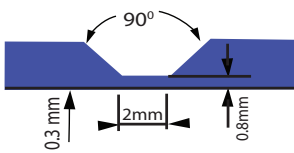
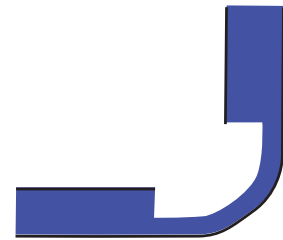
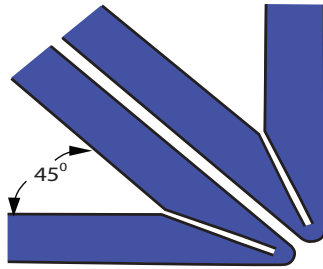
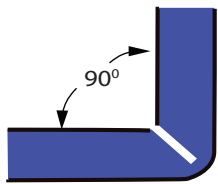
Panel Thickness 3mm 4mm and 6mm Radius 120mm 175mm and 275mm Tighter radii can be achieved with other alloys or tempers.

## RIVETTING / BOLTING



Use aluminum blind rivet for junction. Fixing work can be done from one direction. Use stainless steel bolt/nut. When panels are connected with junction hole, the equation of  $e > 2D$  indicates a suitable relation between the hole diameter (D) and the distance from the hole center to panel end (e), to ensure sufficient tensile strength of the hole.

# ALUBOND U.S.A PROCESSING METHODS



**V-Shaped Groove for  
90° Foldings**

**V-Shaped Groove for  
45° Foldings**

**Bull nosed groove for  
foldings upto 150°**

Conventional, off the shelf equipment can be used including; universal, vertical and horizontal routing machines.

To avoid pressure marks on the Alubond surface when chucking the work pieces, wooden or plastic shims should be used.

The most suitable cutters for both aluminum and Alubond are high-speed steel or carbon tipped cutters which have a wide tooth spacing, radius and small grooves and small lip angles. These cutters produce perfect cuts under the following conditions:

#### High Speed Steel (HSS) Cutters

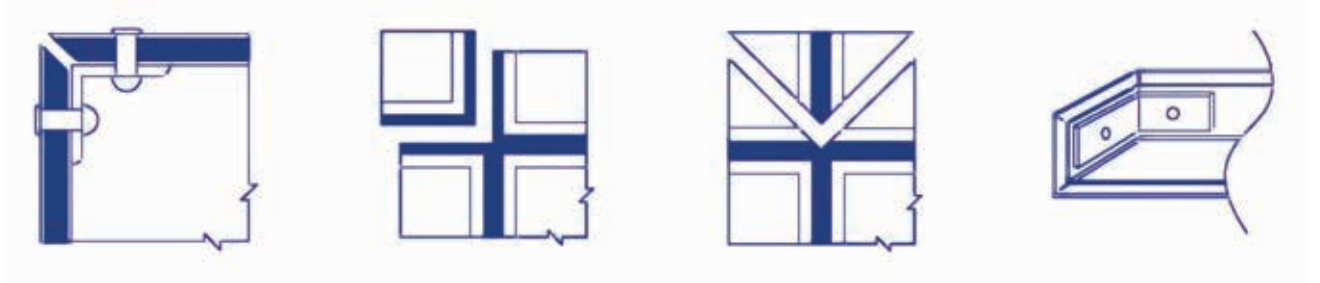
Cutting Speed Max	:	3000 m/min
Feed max	:	24 m/min

#### Carbide tipped (CT) Cutters

cutting speed	:	5000 m/min
Feed max	:	30 m/min

The very simple method of routing makes the shaping ability to Alubond one of its major features. The system allows shapes of various kinds and sizes to be formed out of Alubond. A V-shaped groove is formed in the panel allowing it to be bent without the use of a press brake machine.

# ALUBOND U.S.A PROCESSING METHODS



## SHEARING



The shearing of Alubond u.s.a ACP panels can be easily done using rotary shears or a guillotine. To prevent damage to the panel, the hold down on the shear should be fitted with a shock absorbing rubber pad.

## PUNCHING



Punching flat-formed parts from Alubond u.s.a is performed in the same way as solid aluminum sheet, using the narrowest possible cutting gap and evenly ground tools.

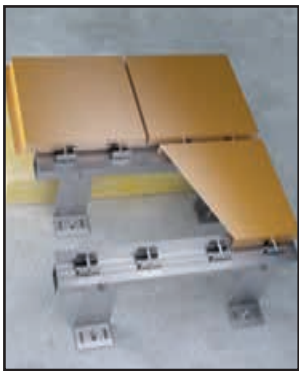
## PLANING & FILLING OF EDGES



When using a jig saw on Alubond u.s.a, swarf is often left behind on the edges of the sheet. For removing this swarf and finishing off the edges, plane cutting files work best. Files with screen-like perforated roots, or tools with very coarse or rasp-like cut are recommended for filing. Through these perforations the swarf will be removed from the tool surface. The file profile should be from slightly to fully rounded. The proper filing direction is lengthways along the edge. When clamping a sheet of Alubond u.s.a between jaws, a shim of wood or plastic will protect the surface against damage.

## Substructure Systems for Ventilated facades

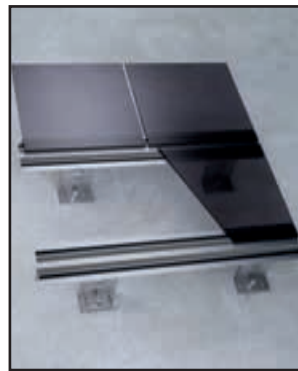
Alubond offers state of the art substructure systems for ventilated facades with various cladding options. These systems are developed based on new architectural trends and requirements. Following are the most popular ventilated systems which caught the attention of architects/consultants across the globe and are appreciated for their asthetic expression, easy installation, superior thermal insulation and above all economic pricing.



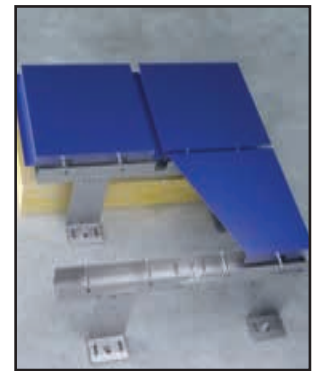
SYSTEM SLIDER



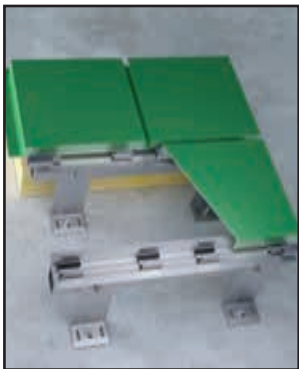
SYSTEM STONE



SYSTEM TACK



SYSTEM BOLT



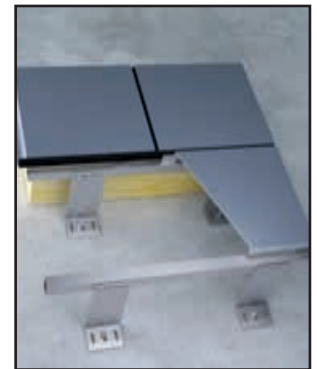
SYSTEM BOX



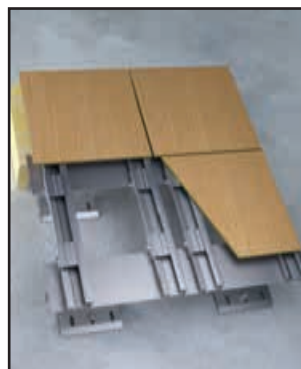
SYSTEM CONTINUAL



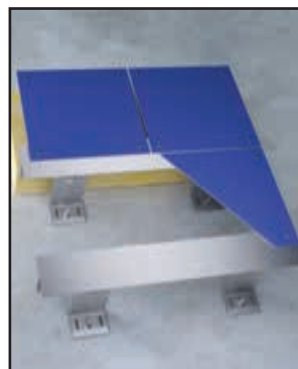
SYSTEM FIT



SYSTEM GASKET



SYSTEM HIDE



SYSTEM RIVET

# CONTACT US

Eurocon Building Industries F.Z.C  
Mulk Holdings F.Z.C  
P.O. Box 42642, Hamriyah Free Zone, Sharjah, U.A.E  
Tel : + 971-6-5262202  
Fax : + 971-6-5262203  
E-mail : info@alubond.com

Alubond Middle East L.L.C  
P.O. Box No. 30103, Al Jurf, Ajman, U.A.E  
Tel:+971-6-5262202  
Fax : +971-6-5262203  
E-mail : alubondmiddleeast@alubond.com

Alubond Europe doo  
Nemanjina 130,  
26320 Banatski Karlovac, Serbia  
TIF+381 13 652 852  
E-mail: info@alubondeurope.com  
Website: www.alubond.com

Alubond DACS India (P) Ltd  
Enpar House, Ambika Mills Compound,  
Senpati Bapat Marg, Lower Parel,  
Mumbai 400013, India  
Tel: +91 22 4321 1400  
Fax: +91 22 4321 14444  
E-mail : alubonddacs@alubond.com

American Building Technologies Inc  
6957 Olde Creek Road Rockford, Illinois 61114, U.S.A  
Tel : 815 331 4121  
Fax : 815 713 4525  
E-mail: greeninfo@alubond.com

[www.alubond.com](http://www.alubond.com)



Mulk Holdings



Incorporation Certificate  
U.S.A



ASTM E 119  
Standard, U.S.A



Din and EN Standards  
Germany



ASTM Standards -U.S.A



NFPA285  
ASTM E84 - CLASS A



Intertek



ME5063 - FR-A2  
ME5059 - FR-B  
ME5055 - FR-B1  
ME5056 - FR  
CF5061 - FR-B1  
CF5062 - FR-B2